

*Ultimate Trading & Consulting DMCC*

---

# Drilling Rig KLEMM 909-2

---



---

# KLEMM Machinery

---

**KLEMM** is a worldwide leader specializing in production of **drilling rigs** with a total weight of up to 32 tons. It is recognized in terms of the following characteristics:

- ♦ **Acknowledged Performance:** The machinery has been developed in a way that it can be used on a continuous basis – without any long stops.
- ♦ **High Reliability:** This equipment has been proved to be highly reliable. There are no major issues have been raised in terms of tools breakage or spare parts change.
- ♦ **Long Life Time:** The average lifecycle of the machinery is proved to be 30 years which is longer than other equipment with same configurations.



---

# Drilling RIG KR 909-2

---

The KR 909-2 is a compact and powerful drilling rig. Through tried and tested KLEMM components, the rig is easily adaptable to **drilling method**, such as:

- Rotary,
- Rotary-percussive
- Auger drilling.



**KLEMM KR-909-2** is the best to be used for the following types of works

- ❖ **Micropiling** (Cased or Uncased) - Duplex Drilling System
- ❖ **Soilnailing** and Tie-back anchoring applications
- ❖ **Foundation Underpinning**
- ❖ **Soil Investigation**

Our configuration is Klemm 909-2 with two rotary heads: KH9 and KH13, allowing operator to carry out **double head drilling activities** with auger and casing drilling simultaneously.

Using different type of accessories machinery allows to drill from **soft soil surface**, with an injection of different types of liquid: air, water and cement, to **soft and medium rock** surface whereby using, rotary-percussive technique with particular drilling bits.

# Hydraulic System

<i>1st Circuit</i>	l/min	150 load-sensing
<i>2nd Circuit</i>	l/min	150 load-sensing
<i>3rd Circuit</i>	l/min	30 konstant
<i>4th Circuit</i>	l/min	20 konstant
<i>Operating Pressure max.</i>	bar	250
<i>Hydr. Oil Tank Capacity</i>	l	500

# Crawler Base B1

<i>Tractive Force max.</i>	kN	110
<i>Crawler Speed</i>	km/h	2,4
<i>3-rib Grouser Plates</i>	mm	400
<i>Ground Clearance</i>	mm	350
<i>Ground Pressure</i>	N/cm <sup>2</sup>	6,25

---

# DRILL MAST type 305

---

<i>Total Length</i>	mm	6600
<i>Feed Force</i>	kN	48,0
<i>Retraction Force</i>	kN	97,0
<i>Feed Rate</i>	m/min	14,4
<i>Retraction Rate</i>	m/min	7,2
<i>Fast Feed Rate</i>	m/min	48,0
<i>Fast Retraction Rate</i>	m/min	24,0



---

# Other Characteristics

---

- **Clamping and breaking device** type D has the following specifications:

Casing maximum diameter - 254 mm Casing maximum diameter - 42 mm Clamping Force - 125 kN at 250 bar  
Breaking Torque - 43 kNm at 250 bar

- **GAMMA 202 H Water Pump**

Flow Rate - 80 l/m Operation Pressure 30 bar

- Equipped with the **Manual Flushing assembly 1 1/2"**

# Transport Dimensions

- Length 8400 mm
- Width 2500 mm
- Height 3100 mm
- Weight 17.8 tonns



---

# Convenience

---

- The **drilling and driving functions** are **radio remote controlled**. The operator thus has freedom of movement and more options on the job site guaranteeing him an optimum view of all working processes. A **cable remote controlled** version of the control console is also available.
- Drilling parameter information is conveyed via large and **easily readable manometers**.
- Rig setup is **hydraulically controlled** and can be **performed from the base unit**.

---

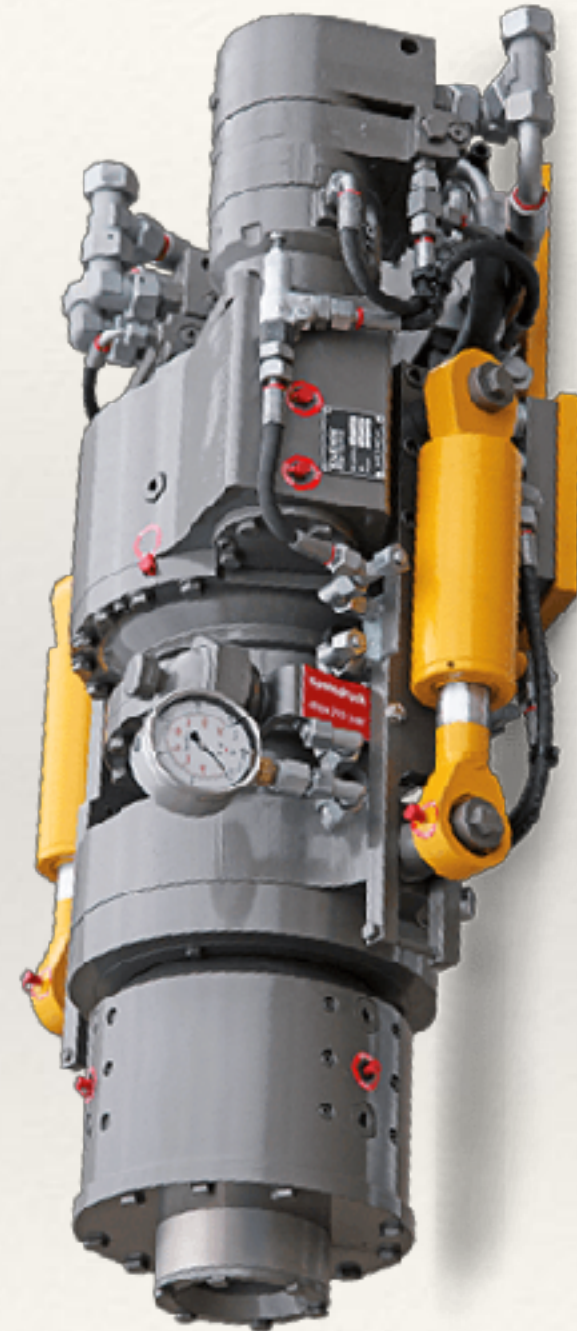
# ROTARY HEAD KH 9 / KH 13

---

**Drilling Rigs** equipped with **rotary heads** for all kinds of rotary drilling applications.

**Rotary heads** are classified according to the **maximum available torque**.

The **torque** and the corresponding **rotation speed** of a **rotary head** can be changed for a constant power output of the drilling rig by use of **hydraulic motors** with a **different oil flow capacity**.



---

# ROTARY HEAD KH 9

---

- ❖ With the **HC motor attached**, the head provides the **flow rate** of 200 l/min and 114 l/min **revolutions per minute**
- ❖ The **torque** value in this case - 10,1 kNm
- ❖ The **average pressure** difference is 180 bar
- ❖ The **total weight** of the Head is 255 kg

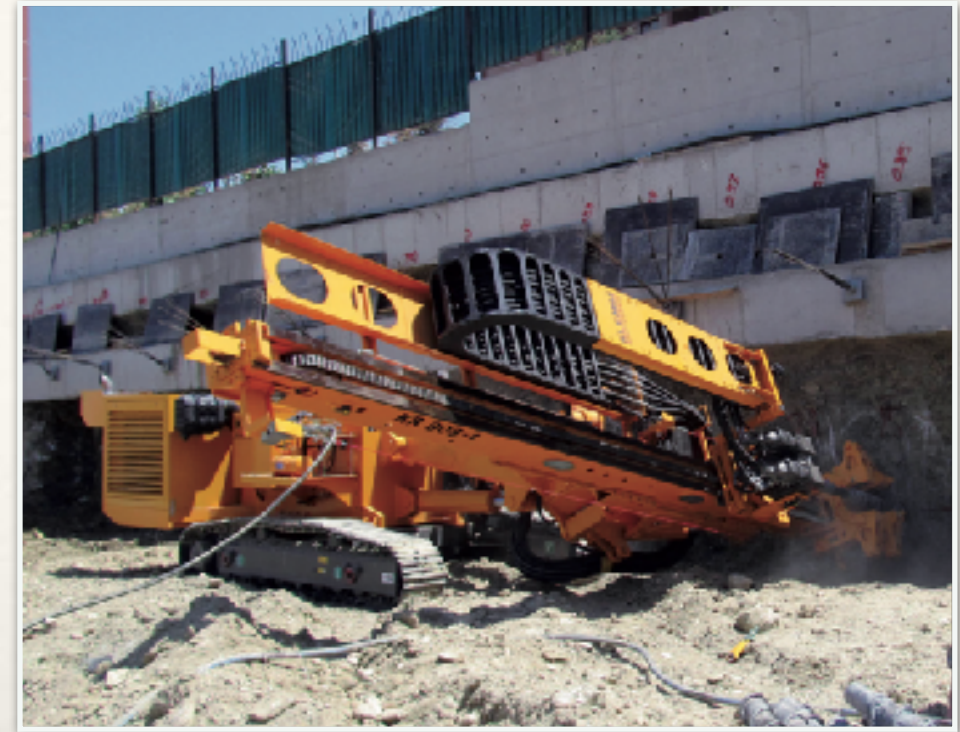
---

# ROTARY HEAD KH 13

---

- ❖ With the **HC motor attached**, the head provides the **flow rate** of 200 l/min and 115 l/min **revolutions per minute**
- ❖ The **torque** value in this case - 15,1 kNm
- ❖ The **average pressure** difference is 180 bar
- ❖ The **total weight** of the Head is 325 kg





---

# CONTACT US

---



Office 801, 802,  
Swiss Tower, Cluster Y,  
Jumeirah Lake Towers,  
Dubai, U. A. E.



+971 (4) 277 69 45



+971 (4) 277 63 26



[info@utcdubai.com](mailto:info@utcdubai.com)